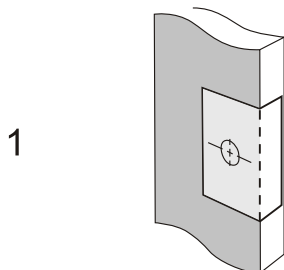


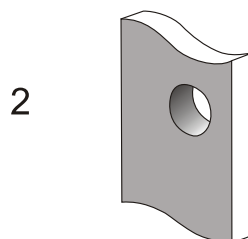
Installation Instructions Cavity Sliding Flushpull Kit Passage

www.windsorbrass.co.nz

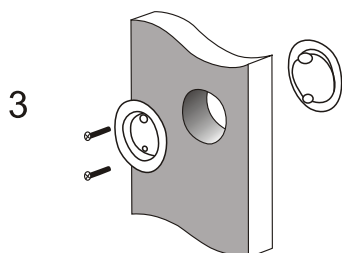
Scribe required drilling centers using template below.



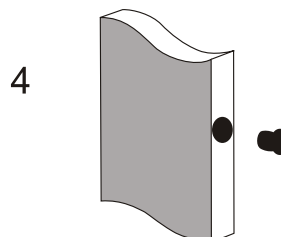
Drill 54mm hole through door



Secure inside plate to outside plate using screws supplied.



Fit door edge finger pull.
Locate a position approximately 150mm above Flush Pull and drill 25mm hole with spade bit
Press in finger pull. (For stronger fit, use builders glue)



Fold here on door edge

